

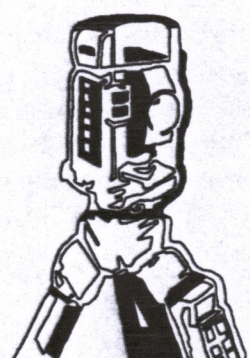
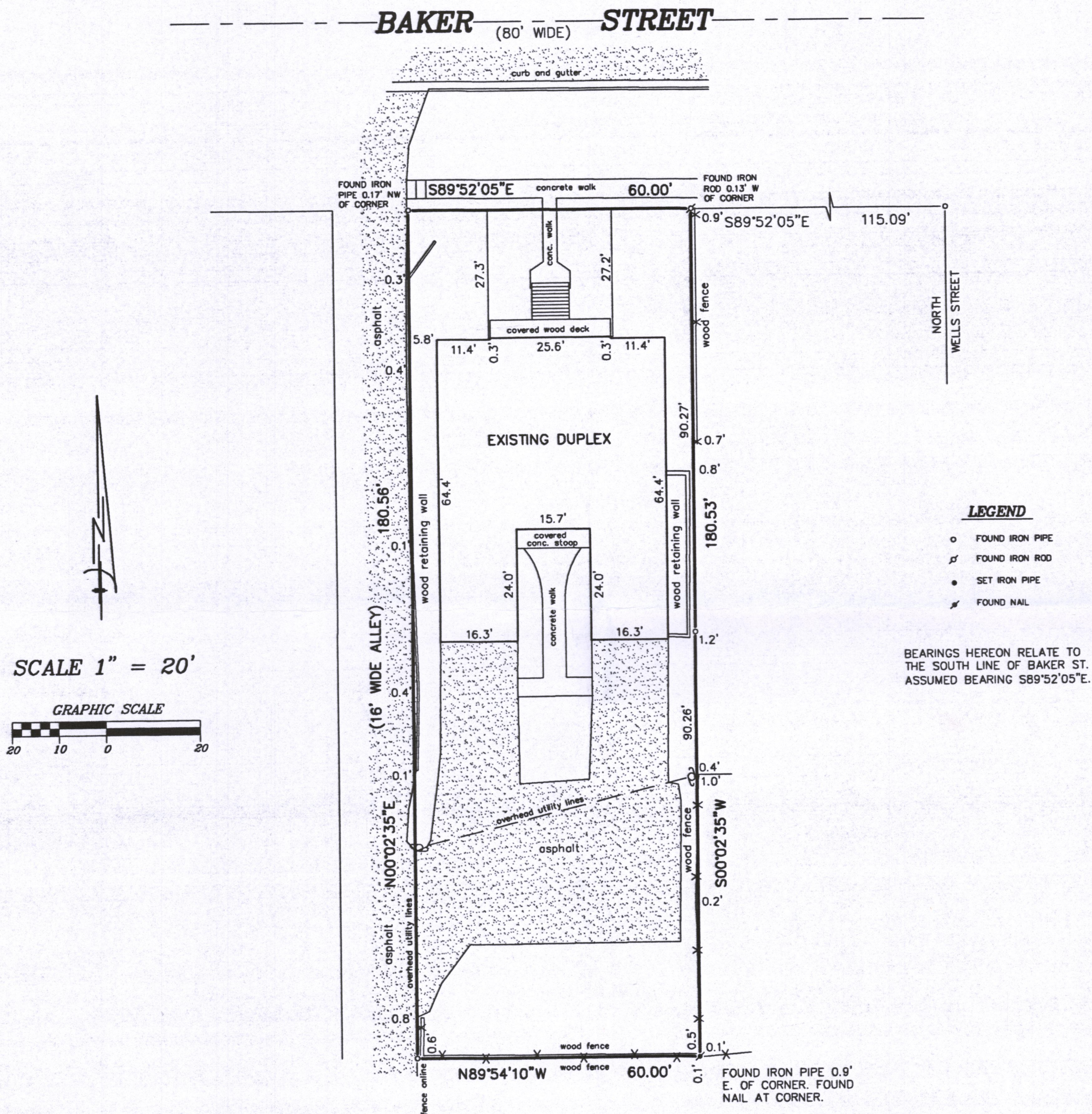
PLAT OF SURVEY -OF- BAKER STREET CONDOMINIUM

UNIT 1 AND SO MUCH OF THE UNDIVIDED INTEREST IN THE COMMON AREAS AND FACILITIES APPURTENANT TO SUCH UNIT IN THE PERCENTAGE SPECIFIED AND ESTABLISHED IN THE HEREINAFTER-MENTIONED DECLARATION, IN A CONDOMINIUM COMMONLY KNOWN AS BAKER STREET CONDOMINIUM CREATED UNDER THE CONDOMINIUM OWNERSHIP ACT OF THE STATE OF WISCONSIN BY DECLARATION RECORDED ON MARCH 31, 2006 IN THE OFFICE OF THE REGISTER OF DEEDS FOR WALWORTH COUNTY, WISCONSIN AS DOCUMENT NO. 672260.

UNIT 2 AND SO MUCH OF THE UNDIVIDED INTEREST IN THE COMMON AREAS AND FACILITIES APPURTENANT TO SUCH UNIT IN THE PERCENTAGE SPECIFIED AND ESTABLISHED IN THE HEREINAFTER-MENTIONED DECLARATION, IN A CONDOMINIUM COMMONLY KNOWN AS BAKER STREET CONDOMINIUM CREATED UNDER THE CONDOMINIUM OWNERSHIP ACT OF THE STATE OF WISCONSIN BY DECLARATION RECORDED ON MARCH 31, 2006 IN THE OFFICE OF THE REGISTER OF DEEDS FOR WALWORTH COUNTY, WISCONSIN AS DOCUMENT NO. 672260.

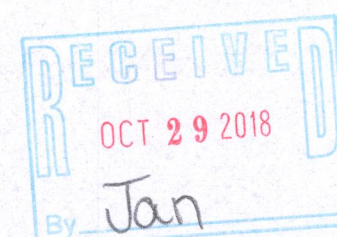
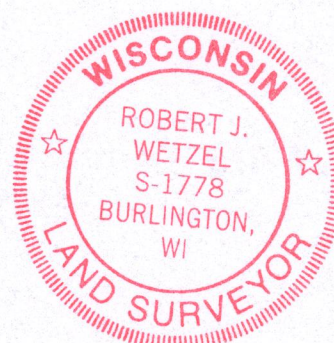
SURVEY FOR: PSG INC.

SURVEY ADDRESS: 414 AND 416 BAKER STREET,
LAKE GENEVA, WI



B.W. SURVEYING, INC.

412 N. PINE STREET
BURLINGTON, WI 53105
(262)-767-0225



THIS IS NOT AN ORIGINAL PRINT UNLESS
THIS SEAL IS RED.

Robert J. Wetzel
ROBERT J. WETZEL S-1778

DRAWN BY: RW	REVISED DATE: 9/6/18 DATE: 9/5/2018
CHECKED BY: BW	DRAWING NO.: 9715D1
JOB NO.: 9715	SHEET 1 OF 1

ZBS-1 007-3503